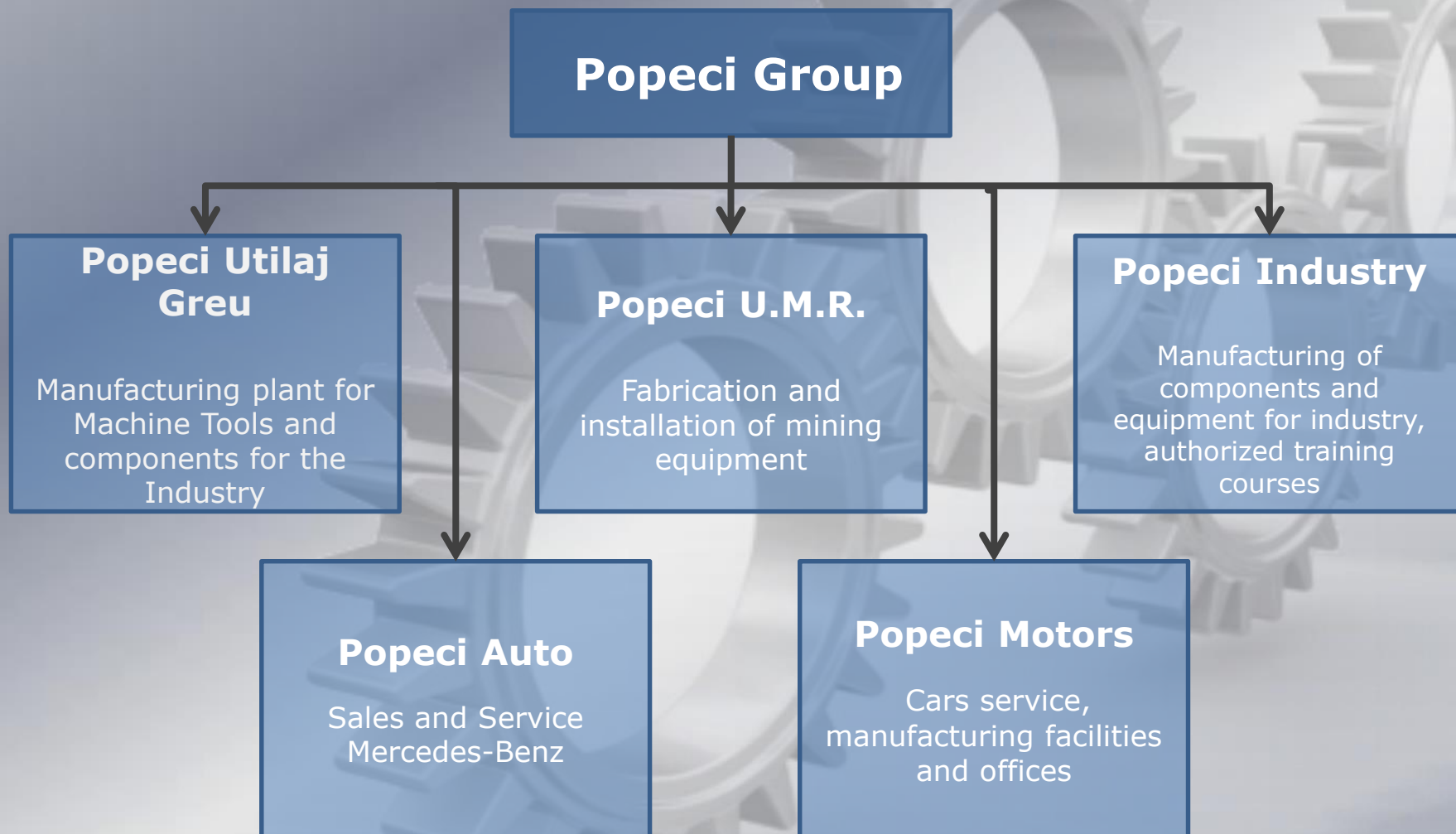


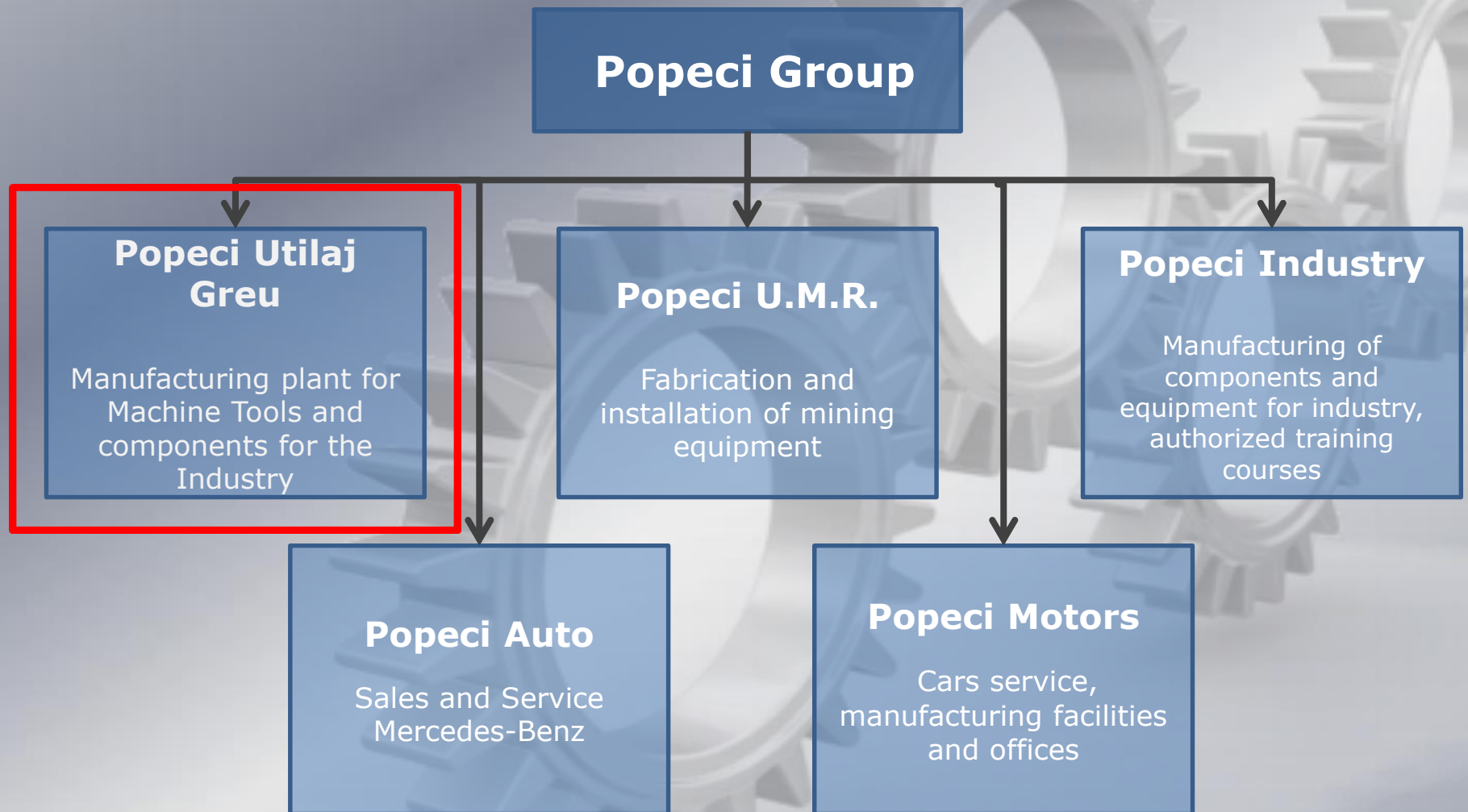
**POPECI****POPECI UTILAJ GREU****Str. Tehnicii nr. 1, 200440, Craiova, Romania****Tel.: 0040 435 100****Fax: 0040 437 000****0040 743 019 771****0040 435 845****E-mail: [office@popeci.ro](mailto:office@popeci.ro); [ioana.popa@popeci.ro](mailto:ioana.popa@popeci.ro)****[www.popeci.ro](http://www.popeci.ro)**



# **Overview**

## **Popeci Utilaj Greu SA**





Total area  
260.000 m<sup>2</sup>

Built area  
120.000 m<sup>2</sup>

Employees  
750

Employees in  
production 460



## Company Certificates:

- ISO 9001 <C:\Users\Ioana Popa\Desktop\CERTIFICATE 2016\ISO 9001.pdf>
- DIN 18800 <C:\Users\Ioana Popa\Desktop\CERTIFICATE 2016\DIN 18800.pdf>
- EN 1090.1 <C:\Users\Ioana Popa\Desktop\CERTIFICATE 2016\EN 1090.1.pdf>
- EN 1090.2 <C:\Users\Ioana Popa\Desktop\CERTIFICATE 2016\EN 1090.2.pdf>
- ISO 3834 -1 <C:\Users\Ioana Popa\Desktop\CERTIFICATE 2016\ISO 3834 -1.pdf>
- ISO 3834 -2 <C:\Users\Ioana Popa\Desktop\CERTIFICATE 2016\ISO 3834-2.pdf>
- EN ISO 14001 <C:\Users\Ioana Popa\Desktop\CERTIFICATE 2016\EN ISO 14001.pdf>
- EN ISO 50001 <C:\Users\Ioana Popa\Desktop\CERTIFICATE 2016\EN ISO 50001.pdf>
- OHSAS 18001 <C:\Users\Ioana Popa\Desktop\CERTIFICATE 2016\OHSAS 18001.pdf>

## **CUTTING**

- 2 oxigas cutting machines: CNC Messer Grisheim and Apolda
- 1 plasma cutting for refracting and non-ferrous materials: CNC Messer Grisheim

## **BENDING and ROLLING**

- Bending press: max. Length 4.050 mm; max. Force 600 kgF
- Rolling capacity: 80 x 400 mm; for widths smaller than 4.000 mm the thickness of the processed sheet can reach up to 300 mm.

## **WELDING**

- Monthly welding capacity for welded structures with average level of complexity: ca. 10.200 hours
- Welding personnel: 60 authorised welders + 55 fitters
- Welding area surface: 20.000 m<sup>2</sup>
- Max. lifting capacity in the welding area: 160 to

## **SANDBLASTING**

- Steel plates sandblasting before cutting
- Sandblasting cabin for welded structures

## MACHNING

- 44 CNC-machines covering a wide range of machining operations: turning on vertical land parallel lathes, milling on movable portal milling machines, deep drilling, boring, honing, gear cutting, grinding (see next slides)
- 65 operators
- Machning area surface: 45.000 m<sup>2</sup>
- Max. lifting capacity in the machining area: 160 to

## ASSEMBLY

- Complete assembly (mechanical, hydraulic, electrical) including function tests
- 50 skilled employees
- 2.000 m<sup>2</sup> of leveled erection platforms, including 4 assembly tables with fixing slots
- Asseblly area surface: 11.000 m<sup>2</sup>
- Max. lifting capacity in the assembly area: 220 to

## **STRESS RELIEF**

- Heat treatment
- Vibration

## **PRIMING AND PAINTING**

- 2 closed cabins (controled parameters of temperature and humidity)
- 2 open cabins (controled parameters of temperature and humidity)

## **QUALITY CONTROLE**

- NDT (MT/PT; UT; RT)
- Dimensional control with FARO Lasertracker
- Hardness testing
- Chemical and mechanical testing



Turning, Milling and Boring  
on Vertical Lathe



Turning on Vertical Lathe  
and Parallel Lathe



Milling on Movable Portal  
Milling Machine



Gear cutting



Deep Drilling, Boring, Honing



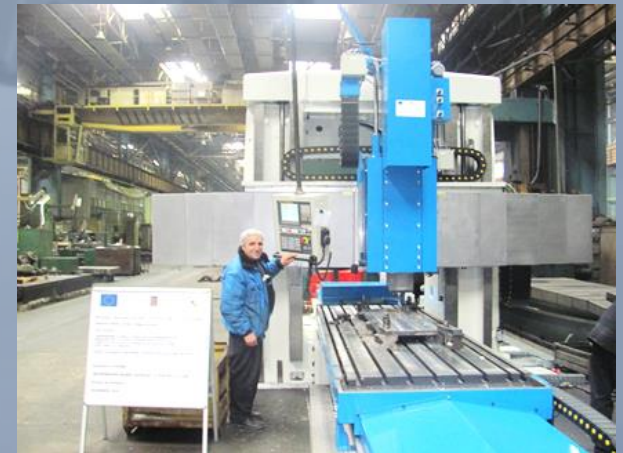
Grinding



Cutting, Bending, Welding



- POPECI company is currently running three modernization and development projects, which are leading to an increased productivity and manufacturing performance.
- An Engineering Research and Innovation Department was recently founded.
- The investment amounts to approx. 20 million Euro and comes from our own funds, funds from the national budget and EU funds.





**Modern CNC - Heat Treatment  
Facilities**



**Modern manufacturing CNC-equipments**



**Modern  
manufacturing  
equipments**





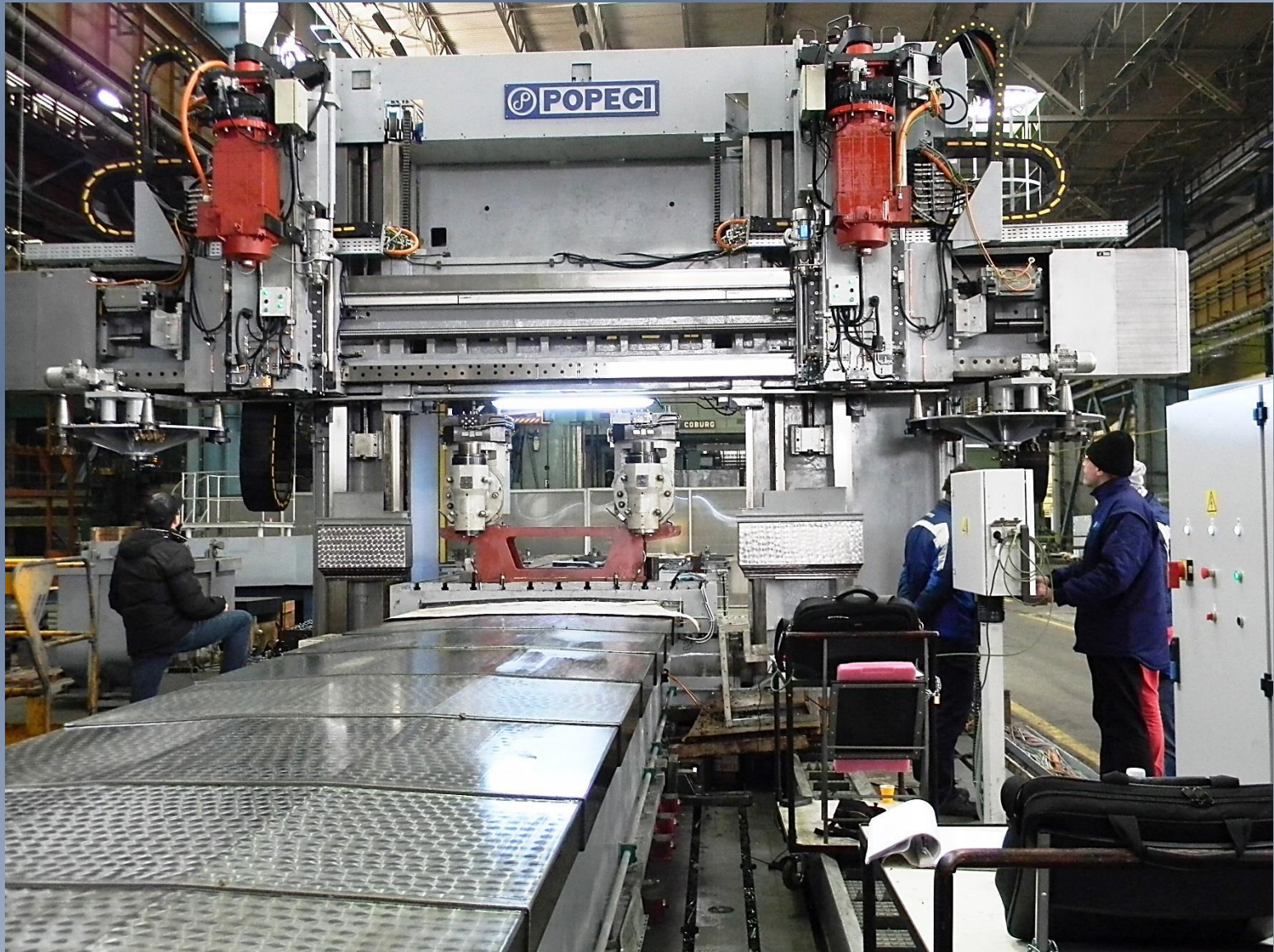
**CNC Vertical Lathes**



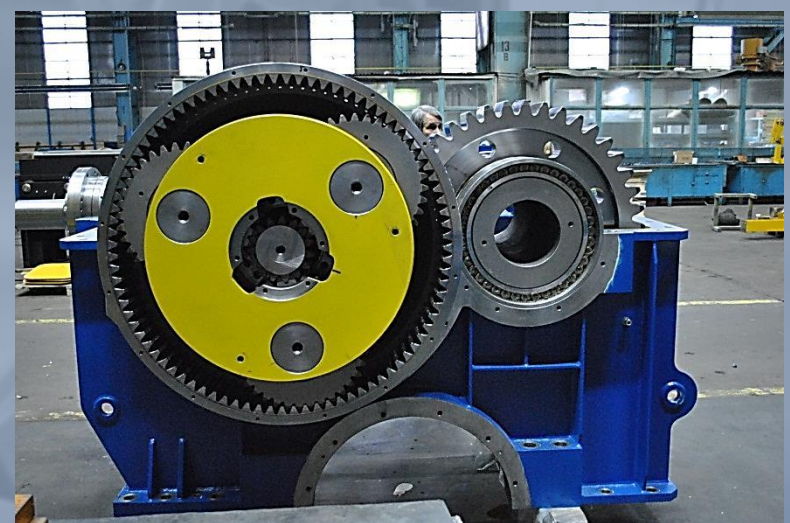
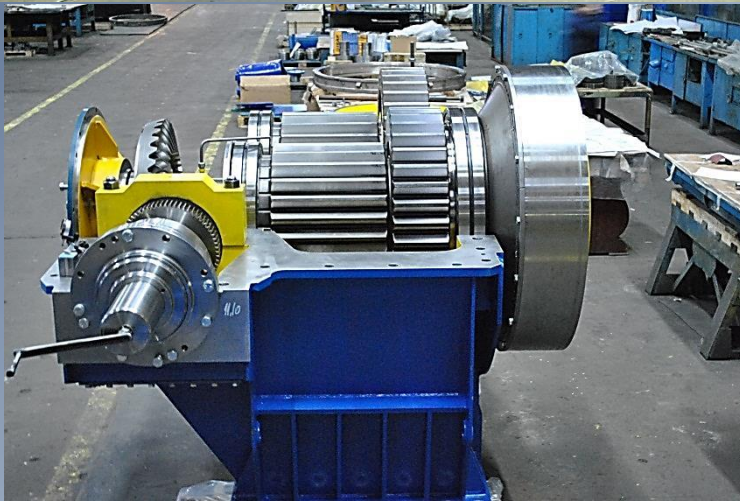
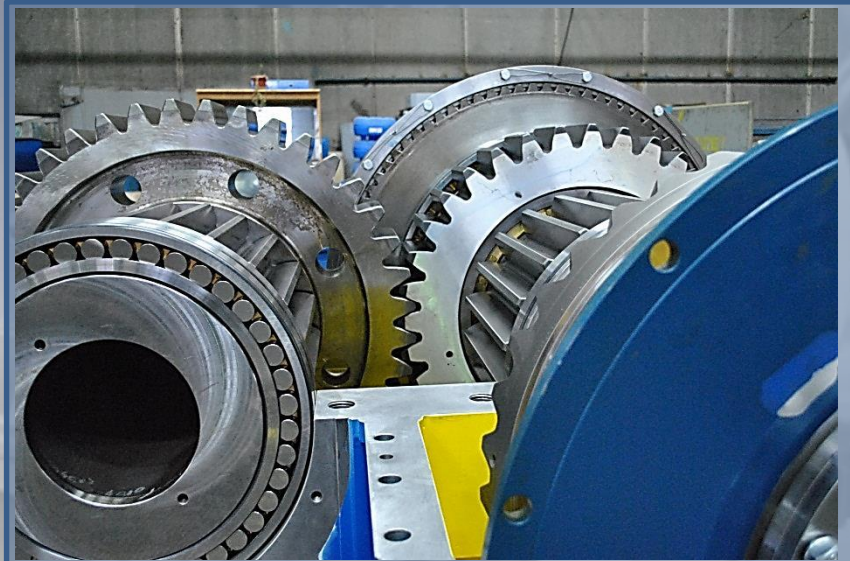
**Hydraulic Presses**



**Scrap Presses**



**Milling machine FLP 2200/2500\*8000 CNC**



Planetary gear system



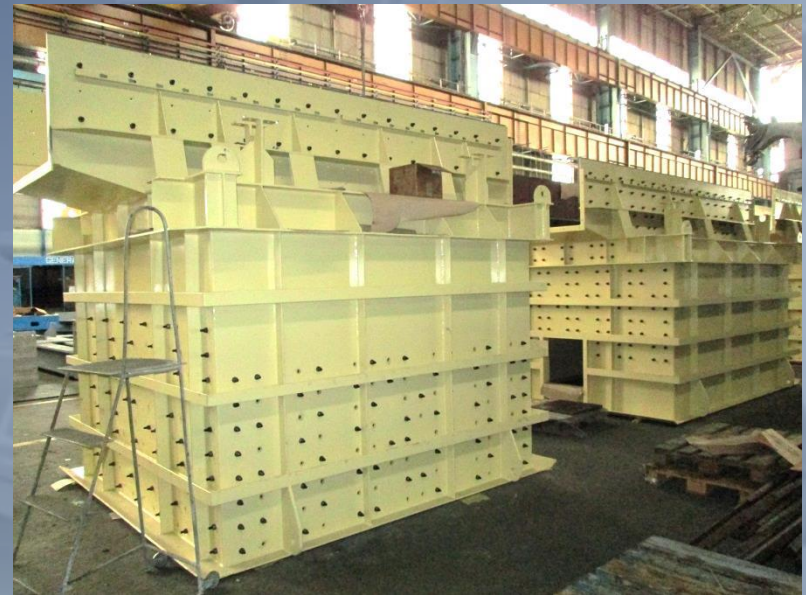
**Wheels, shafts and casing houses**



**Gear system for BWE 4KCM 4000**



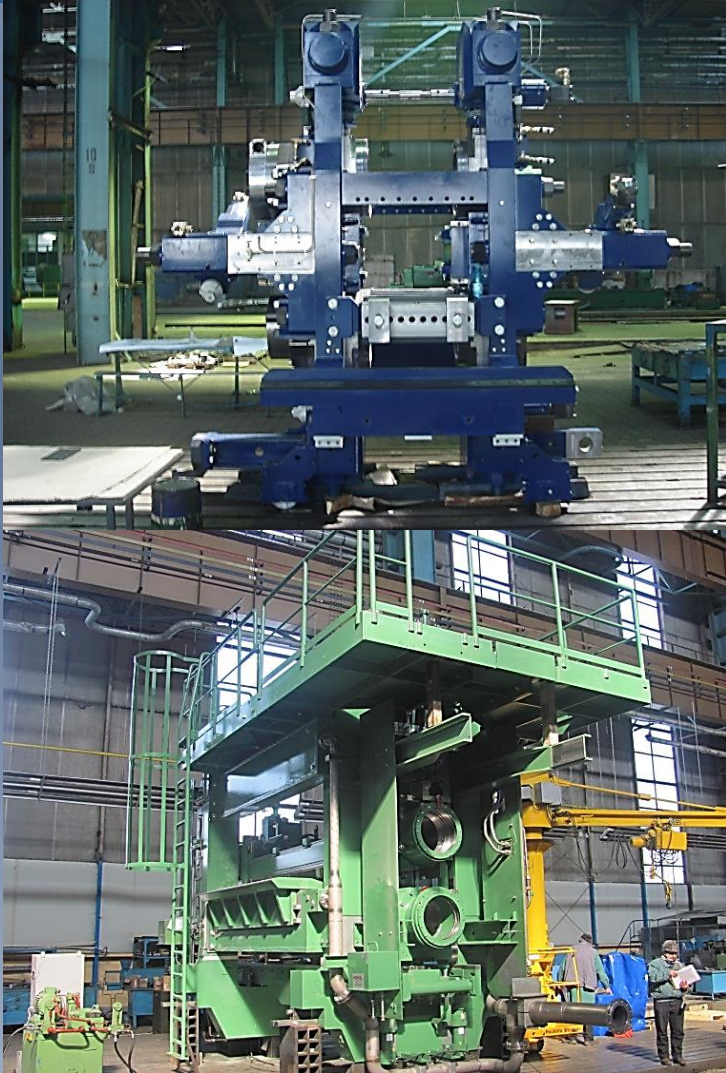
**Bucket Wheel Excavators (BWE)**



**Conveyor components**



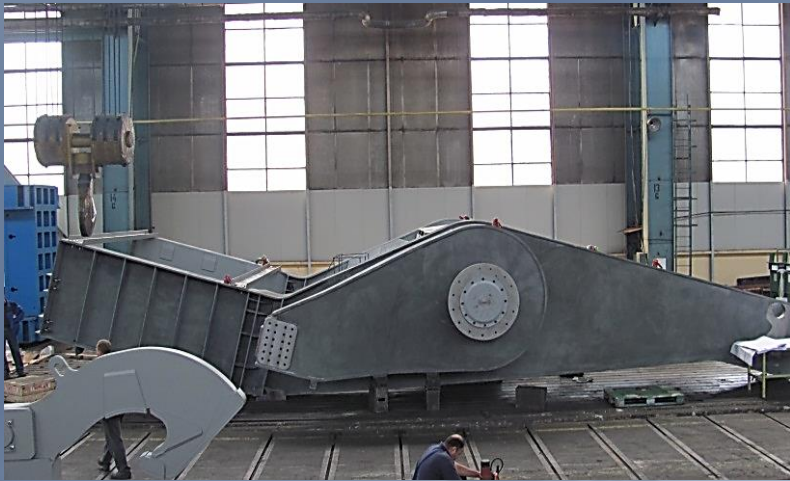
**Conveyor components**



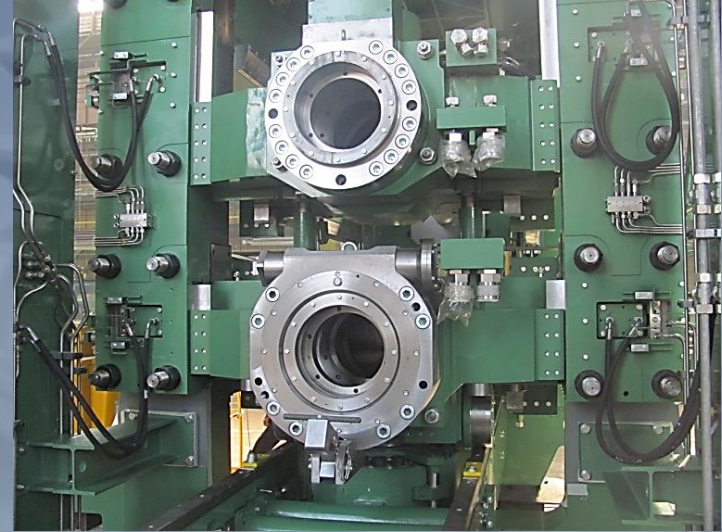
**Mill stands**



**Tubes welding lines**



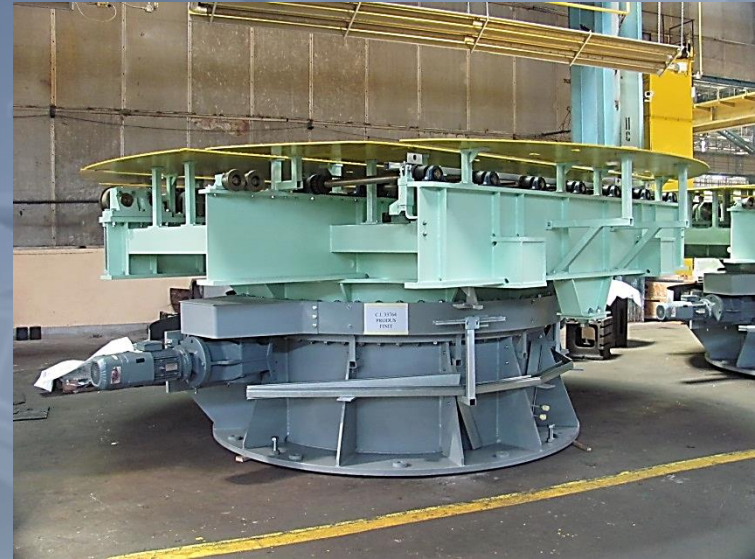
**Mechanical ladle lifting system**



**Chocks**



**Automatic storage and retrieval system**



**Transfer devices; Rotating and lifting tables**



**Machine for Producing Mineral Wool**



**Casting chamber**

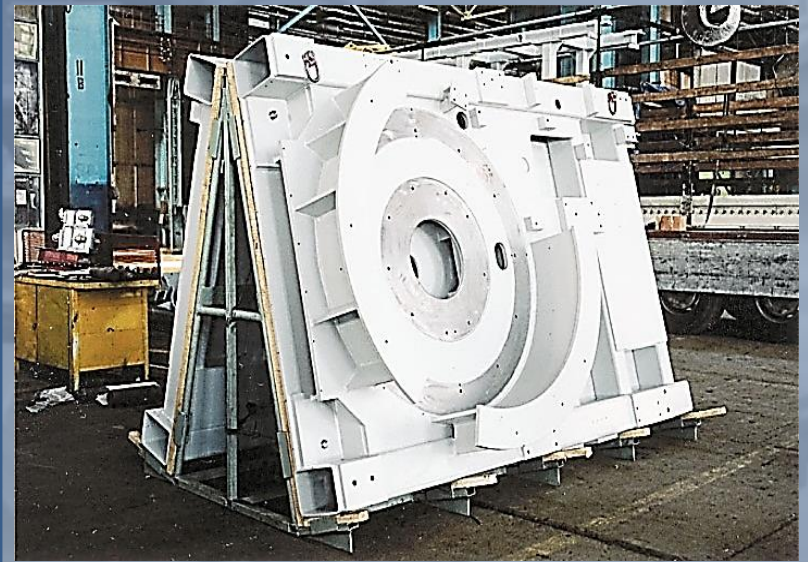


**Scrap Bucket**



**Pinch roll**





**Stretch blow molding  
machines**





**Assembly and testing devices for AIRBUS 380**



**Assembly and testing  
devices for AIRBUS 380**





**Harbour crane tower**



**Harbour crane arm**



**Main frame manipulator**



**Stainless Steel Exhaust Diffuser**



**Parts for Presses**



**Parts for Presses**

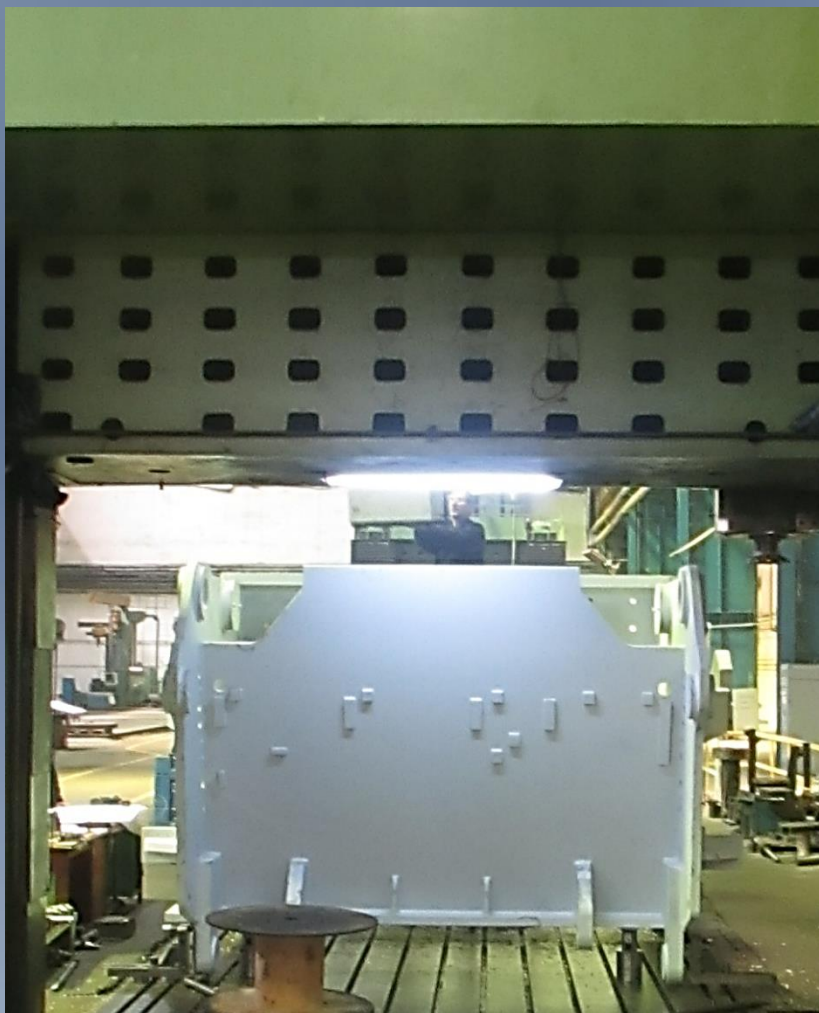


**Housings and Parts for Presses**



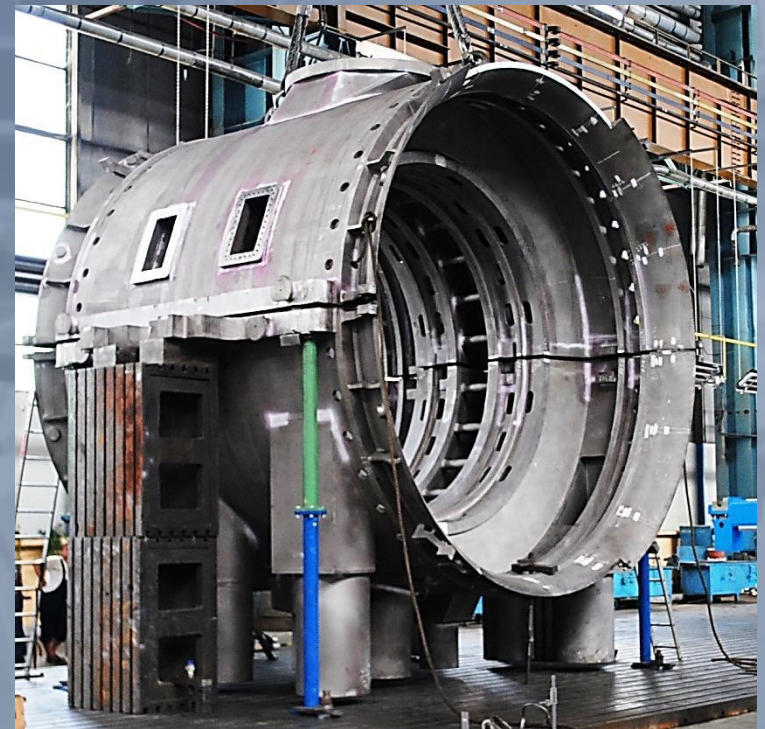
# Products - Compact Track Terrain Loaders







Inner  
casing  
13,9 m<sup>2</sup>  
for  
Nuclear  
Turbine





Inner casing 8,7 m<sup>2</sup> for Nuclear Turbine



**Exhaust  
Casings  
for  
Steam  
Turbines**

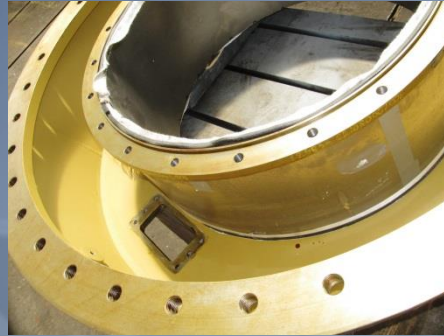


## Outer Casings for Steam Turbines



**Test Assembly**

## Outer Casings for Steam Turbines

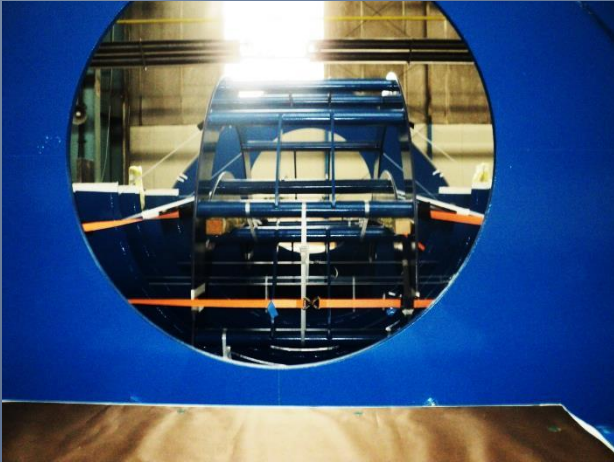


**Painting /  
surface  
protection**





**Casing for Gas  
Turbine**



**Base frame for  
Generators**



## MISSION

To be the most important, trustworthy and respected manufacturer of complex industrial machines from Romania, from the perspective of all our partners:

**CLIENTS, EMPLOYEES, PARTNERS.**

## VISION

We become the best, through partnerships with the best.



- **QUALITY** – in products, relationships and attitude;
- **PARTNERSHIP** – as way of thinking and action in our relationships with our clients, collaborators and employees;
- **RESPECT**
  - for our employees – like encouraging teamwork, emphasizing treatment with dignity, through motivation and appropriate differentiation;
  - for clients – through our client orientation policy;
  - for the environment;
  - for the society – through corporate social responsibility;
- **PASSION**
  - through encouraging innovation and research;
  - through continuous development and learning;
  - through spreading knowledge and the training of our new employees and younger generations;
- **OPTIMISM** – “We can perform” is our message for clients. We are positive, we find the best solutions and we mobilize ourselves.  
We live our values in every action we take.



## Main Reference Clients:

 SIEMENS SMS group SMS LOGISTICS  
SMS group voestalpine metso Rolls-Royce Sidel SULZER GRENZEBACH ABB ThyssenKrupp AIRBUS Generator Technologies

Thank you for your attention!

**POPECI UTILAJ GREU**  
**Str. Tehnicii nr. 1,**  
**200440, Craiova,**  
**Romania**

**Tel.: 0040 435 100**  
**0040 743 019 771**

**Fax: 0040 437 000**  
**0040 435 845**

**www.popeci.ro**

**E-mail: [office@popeci.ro](mailto:office@popeci.ro); [ioana.popa@popeci.ro](mailto:ioana.popa@popeci.ro)**

